

Isolators and Circulators

**2-26.5 GHz**

Ferrite Isolators

Specifications

SMA (F), 2 to 26.5 GHz

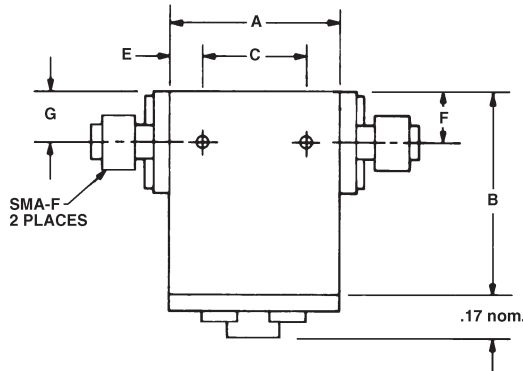
FREQUENCY (GHz)	MODEL	ISOLATION (dB min.)	INSERTION LOSS (dB max.)	VSWR (max.)	PEAK POWER Fwd & Rev (watts)	AVERAGE POWER		TEMPERATURE RANGE (°C)
						Forward (watts)	Reverse* (watts)	
2-4	4913	18	0.5	1.30	50	25	1	0 to +55
4-8	4914	18	0.5	1.30	50	15	1	-20 to +65
7-10	4915	20	0.5	1.25	10	5	1	-20 to +55
8-18	4946	16	0.6	1.45	15	5	1	-20 to +65
11-18	4916	20	0.5	1.25	20	5	1	-20 to +65
18-26.5	4917	17	0.6	1.40	10	3	1	-20 to +65

* Limited by termination power handling capacity

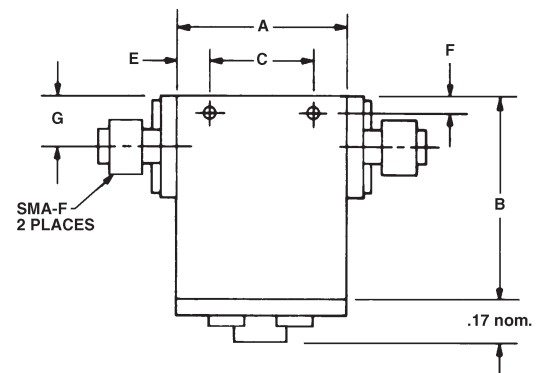


Isolators and Circulators

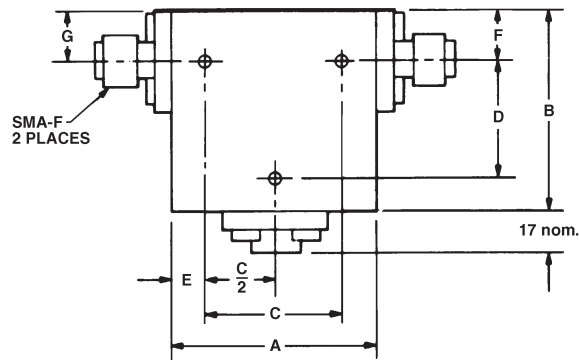
Outline Drawings



OUTLINE I



OUTLINE II



OUTLINE III

NOTES:

TOL: .xx ± .02
.xxx ± .010

*Mounting holes both sides

a = 2-56 UNC-2B

b = 4-40 UNC-2B

MODEL	OUTLINE DRAWING	MOUNTING DEPTH	HOLE SIZE*	THICKNESS	A	B	C	D	E	F	G
4913	III	.18	b	.75	1.60	1.65	1.000	1.10	.30	.25	.25
4914	III	.15	a	.60	1.00	1.00	.750	1.60	.13	.25	.25
4915	II	.15	a	.50	.50	.63	.375	—	.06	.16	.25
4946	I	.13	a	.55	.63	.80	.500	—	.07	.25	.25
4916	I	.13	a	.55	.63	.80	.500	—	.07	.25	.25
4917	II	.18	a	.50	.50	.66	.380	—	.06	.18	.25

Dimensions in inches, unless otherwise specified.